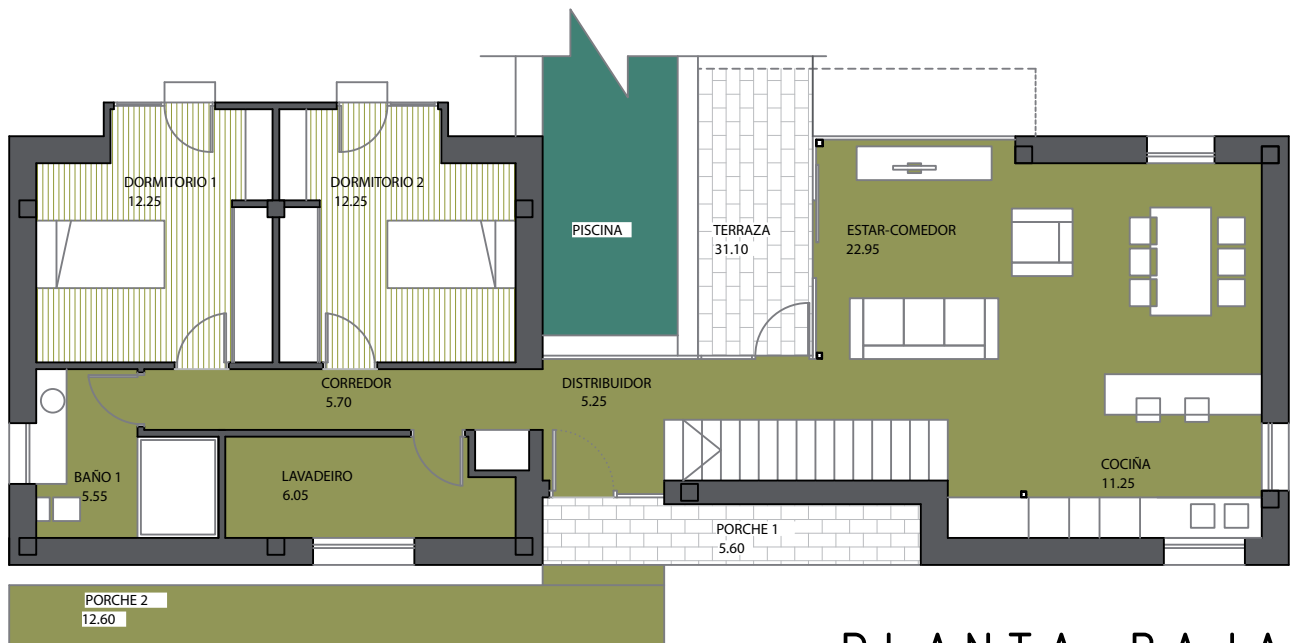
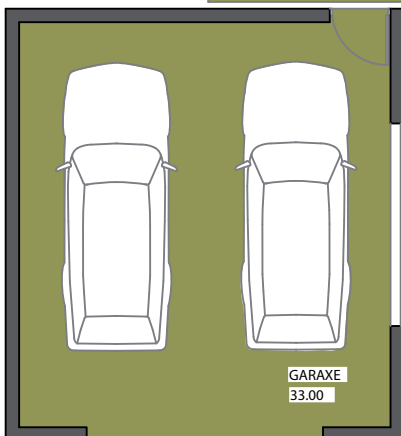


PLANTA ALTA



PLANTA BAJA



	PL BAJA	PL ALTA	TOTAL
SUP UTIL	163.55 M <sup>2</sup>	41.60 M <sup>2</sup>	205.15 M <sup>2</sup>
SUP CONSTRUIDA	191.37 M <sup>2</sup>	48.89 M <sup>2</sup>	240.26 M <sup>2</sup>